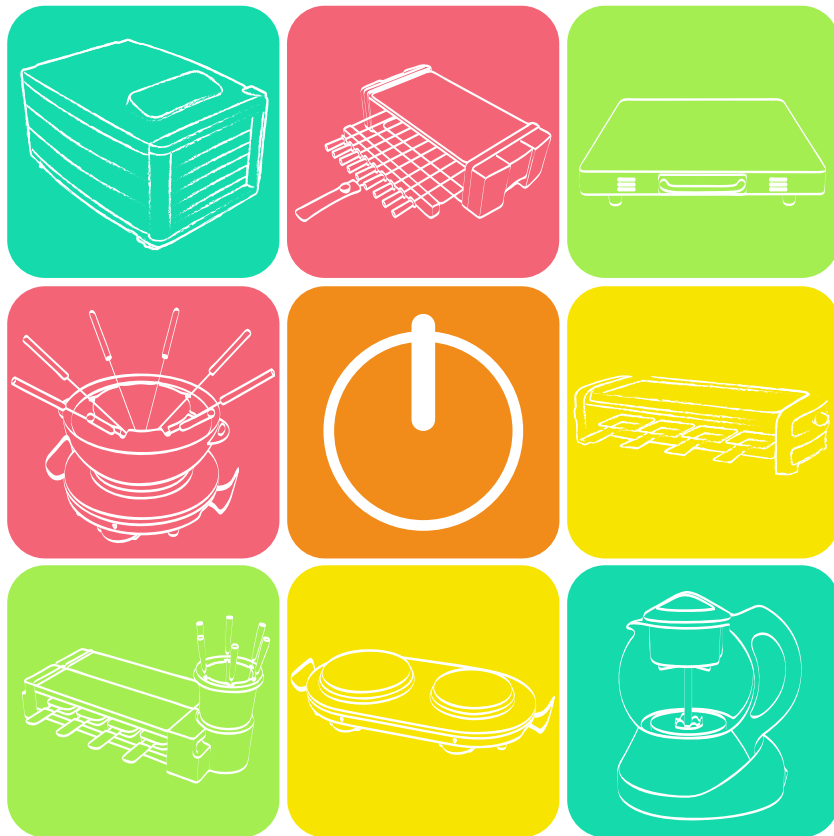




NEW MODEL

PRODUCT CATALOGUE



Profile

Backed by a team with extensive experience in marketing, R&D, quality assurance and professional manufacturing plants, Radus introduces itself as one of the most competitive manufacturers and exporters of domestic electrical appliances.

At Radus, we are dedicated to the production of high quality products allowing us to offer our clients the best available price/quality ratio and professional services available. Our style is built upon a set of core values that have risen from our employees. Taken together, these values define an organization that believes in improving service by building lasting relationships with customers.

A Strategy that delivers

At Radus, our relationship with our customers is not merely grounded on business transactions; rather it envisages the entire spectrum of the aspects of mutual growth. Hence, we can say that we deliver more than just products.

Our Vision

Our efforts are guided by our vision of providing the best quality small electrical appliances at competitive prices. We design and engineer products from an end user perspective rather than by reverse engineering.

We offer...

We specialize in supplying a diverse range of customized solutions. Innovation and technology have been our forte, and thus we keep developing new products to keep in pace with the global competitiveness.





Electric Out-door BBQ

with Deluxe Keep-warm lid & V-stand



- | Extra large cooking surface 57.5x28cm²
- | 2/3 grill + 1/3 griddle,
- | non-stick coated cooking plate,



| Rated 220-240V, 50-60Hz, 2500W



Black coated Steel

Stainless Steel



- | Dimensions: 68x45x102.8cm
- | Weight: 27kg

- | Loading quantity (20'/40'/40'HQ):
326/470/558 pcs



Electric Steak-house Grill

Powerful instant heating to 850° c/1550° f

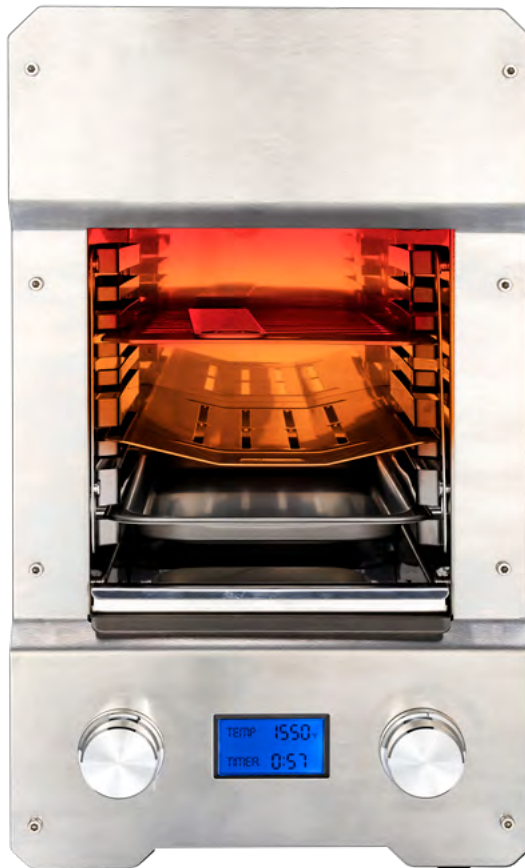
| Rated 220-240V, 50-60Hz, 1600W



| Ultra high infrared heating sears the steak perfectly from the surface and retaining all juice inside



| All spare parts detachable and dish-washable



| Extra elongated heater on top to fit full size steak

| Effective cooking area 16.5x30cm

| Multi-layer cooking height
| Digital timer and temperature setting knob

| LCD display

| Dimensions: 24.5x35.5x42.5cm | Weight: 9.2kg

| Loading Quantity (20'/40'/40'HQ): 360/780/920pcs



Electric Plancha Grill

with Duo Independent Cooking Area



| Rated 220-240V, 50-60Hz, 2300W

| Grill plate designed to be reversible and detachable, easy to use and easy to clean



| 2 dial type thermostats for temperature adjustment

| Heavy gauged die-cast aluminum grill plate with integrated heating element



| Extra large non-stick coated cooking surface 2x750cm², dual function of plancha and grill with independent temperature control

| Dimensions: 63.5x35.5x18cm | Weight: 6.8kg | Loading Quantity (20'/40'/40'HQ: 360/780/920pcs)



radus Food Slicer series



Model No. SL-518M

19cm / 7.5" blade in stainless steel
 Fine thickness adjustment
 from 0 to 15mm
 Detachable carriage
 Full metallic body
 Power system
 Universal DC motor 130W
 Accessories
 Food plate

Giftbox size (mm): 457x303x297
 Pcs/ctn: 1 pcs
 Carton size (mm): 525x 335x360
 Loading quantity (20'/40'/40'HQ):
 442/916/1074 pcs



Model No. SL-518

19cm / 7.5" blade in stainless steel
 Fine thickness adjustment
 from 0 to 15mm
 Detachable carriage
 Full metallic body
 Power system
 Universal DC motor 150W
 Accessories
 Food plate

Giftbox size (mm): 415x210x285
 Pcs/ctn: 2 pcs
 Carton size (mm): 550x 305
 Loading quantity (20'/40'/40'HQ):
 814/1600/1890 pcs



Model No. SL-519N

19cm / 7.5" blade in stainless steel
 Fine thickness adjustment
 from 0 to 15mm
 Detachable carriage
 Full metallic body
 Power system
 Universal DC motor 150W
 Accessories
 Food plate

Giftbox size (mm): 415x210x285
 Pcs/ctn: 2 pcs
 Carton size (mm): 550x 305
 Loading quantity (20'/40'/40'HQ):
 814/1600/1890 pcs



Raclette series

R18 (8PANS)

Rated 220-240V 50/60Hz 1200W
Half natural stone plate and half die-cast grill plate with non-sticking coating
Big cooking surface 42x21cm
Thermostatic temperature control
Power indicator light
8 non-stick coated metal raclette pans

Giftbox size(mm): 570x265x140
Pcs/ctn: 3pcs
Carton size(mm): 590x440x285
Loading quantity(20'/40'/40'HQ):1200/2400/2880pcs



R14 (4PANS)

Rated 220-240V 50/60Hz 600W
Optional stone/metallic/ die cast aluminum plate with non-sticking coating
Big cooking surface 21x21cm
Thermostatic temperature control
Power indicator light
4 non-stick coated metal raclette pans

Giftbox size(mm): 345x225x127
Pcs/ctn: 6pcs
Carton size(mm): 470x360x400
Loading quantity(20'/40'/40'HQ):2700/5700/6120pcs



R2-2X4 DOCKING RACLETTE

Rated 220-240V 50/60Hz 1200W
 Versatile usage, unfolds up to any degrees
 Separate power controls for each grill side
 Hot stone and die cast aluminum plate with non-sticking coating
 8 non-stick coated metal raclette pans
 Easy to operate, easy to clean

Giftbox size(mm): 555x270x158
 Pcs/ctn: 2pcs
 Carton size(mm): 570x280x385
 Loading quantity(20'/40'/40'HQ):928/1960/2230pcs



R2-2X2 DOCKING RACLETTE

Rated 220-240V 50/60Hz 600W
 Versatile usage, unfolds up to any degrees
 Separate power controls for each grill side
 Hot stone and die cast aluminum plate with non-sticking coating
 4 non-stick coated metal raclette pans
 Easy to operate, easy to clean

Giftbox size(mm): 365x315x175
 Pcs/ctn: 4pcs
 Carton size(mm): 645x375x365
 Loading quantity(20'/40'/40'HQ):1296/2592/3024pcs

R3-2X4 NEW DOCKING RACLETTE

Rated 220-240V 50/60Hz 1200W
Versatile usage, unfolds up to 180 degrees
Separate power controls for each grill side
Hot stone and die cast aluminum plate with non-sticking coating
LED working indicator lamp
8 non-stick coated metal raclette pans
Easy to operate, easy to clean

Giftbox size(mm): 555x205x314
Pcs/ctn: 2pcs
Carton size(mm): 568x327x425
Loading quantity(20'/40'/40'HQ):760/1470/1722pcs



R3-2X2 NEW DOCKING RACLETTE

Rated 220-240V 50/60Hz 600W
Versatile usage, unfolds up to 180 degrees
Separate power controls for each grill side
Hot stone and die cast aluminum plate with non-sticking coating
LED working indicator lamp
4 non-stick coated metal raclette pans
Easy to operate, easy to clean



Giftbox size(mm): 365x315x175
Pcs/ctn: 4pcs
Carton size(mm): 645x375x365
Loading quantity(20'/40'/40'HQ):1296/2592/3024pcs





Dehydrator

series 6-layer & 10 layer



Model DH-210D

Rated 220-240V 50/60Hz 800W
 6 heat resistant trays
 Frontal hinged door
 Digital timer and temperature setting
 29-70°C (84-158°F)
 Rear-mounted fan blows air across/all
 trays
 Metallic fan blade

Giftbox size (mm): 523x418x368
 Pcs/ctn: 1 pc
 Carton size (mm): 535x430x380
 Loading quantity (20'/40'/40'HQ):
 310/620/730 pcs

Model DH-210D

Rated 220-240V 50/60Hz 800W
 10 heat resistant trays
 Frontal hinged door
 Digital timer and temperature setting
 29-70°C (84-158°F)
 Rear-mounted fan blows air across/all
 trays
 Metallic fan blade

Giftbox size (mm): 523x418x488
 Pcs/ctn: 1 pcs
 Carton size (mm): 535x 430x500
 Loading quantity (20'/40'/40'HQ):
 210/420/522 pcs

RD-HS SINGLE HOT PLATE

Rated 220-240V, 50/60Hz, 1500W
Cast iron hot plate Φ 185mm
Dial type thermostatic control
Main ON/OFF switch
Power indicator light
Brushed stainless steel finishing
Overheat protection
Chromed handle

Giftbox size(mm): 335x295x108
Pcs/ctn: 5pcs
Carton size(mm): 560x345x304
Loading quantity(20'/40'/40'HQ):
2385/4980/5830pc



radius 

Hotplate
series single & double

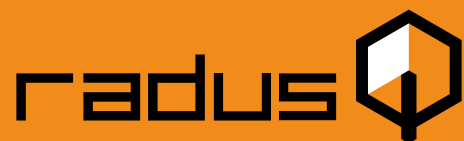


RD-HD DOUBLE HOT PLATE

Rated 220-240V, 50/60Hz, 1000W+1500W
Cast iron hot plate Φ 155mm+185mm
Dial type thermostatic control
Main ON/OFF switch
Power indicator light
Brushed stainless steel finishing
Overheat protection
Chromed handle

Giftbox size(mm): 565x295x108
Pcs/ctn: 3pcs
Carton size(mm): 575x390x310
Loading quantity(20'/40'/40'HQ):
1392/2904/3402pcs





RADUS INDUSTRIAL LIMITED

HK office:

Flat A,10/F., BLK. 3, Kwun Tong Industrial Ctr., 448-458 Kwun Tong Rd., Kowloon, Hong Kong
Tel: (852)2364 4323 Fax: (852)2330 2728

China office:

Unit 603, BLK. 1-A, MOCA Creative Industrial Park, No. 329 Yushan West Road, Panyu,
Guangzhou, China
Tel: (86) 20 3929 2379 Fax: (86) 20 3929 2273
Email: info@radus.com.hk